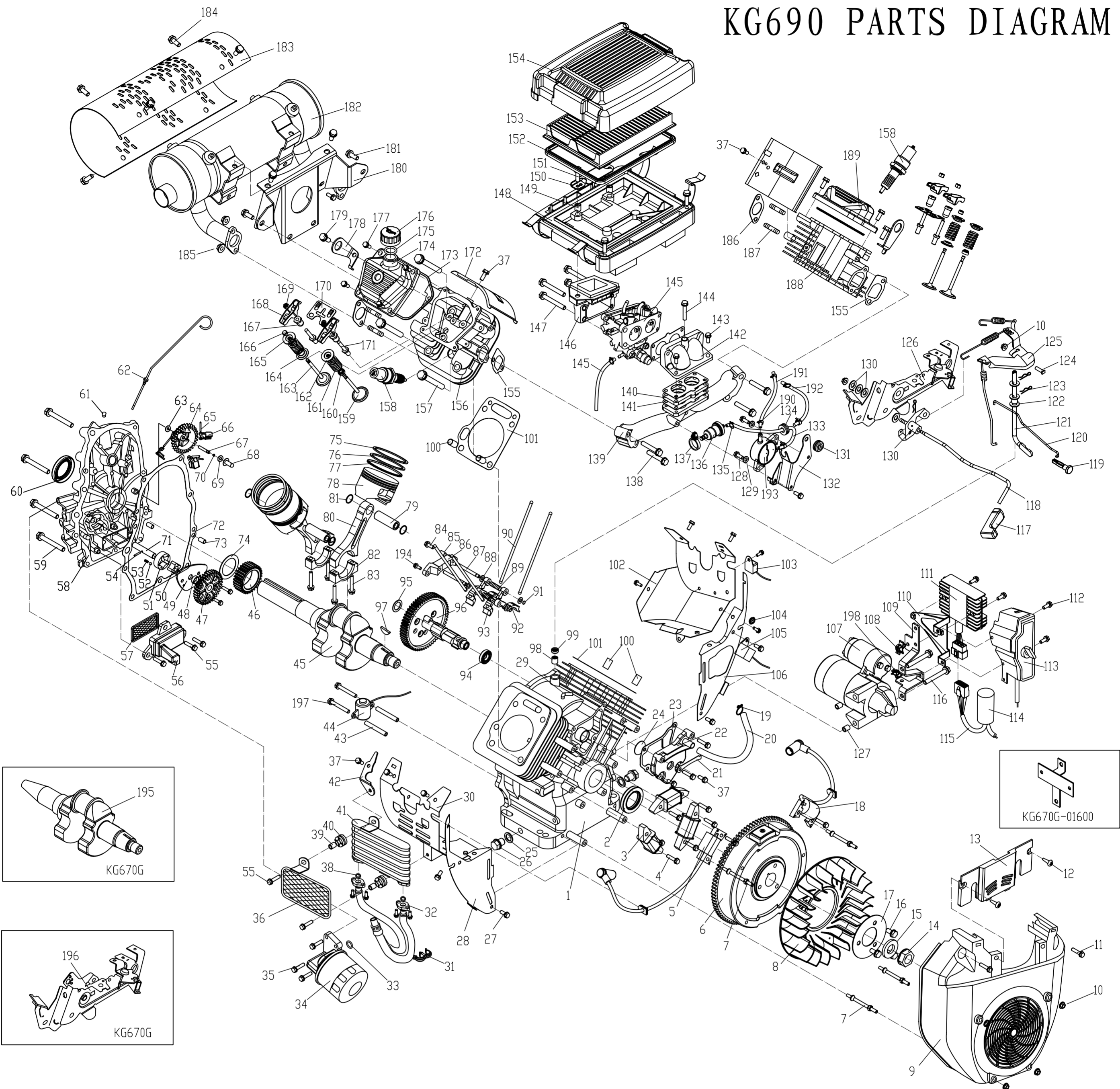


KG690 PARTS DIAGRAM



序号	代号	名称	数量	序号	代号	名称	数量	序号	代号	名称	数量	序号	代号	名称	数量	序号	代号	名称	数量				
1	KG690-01001	Crankcase body	1	34	KG670-13200	Engine oil filter assembly	1	67	KG240-01009	Governor shaft	1	100	KG240-01012	Cylinder head seat pin	4	133	KG670-09008	Fuel intake pipe	1	166	KG240-02003	Exhaust valve regulation shim	2
2	KG670-01031	Rear oil seal	1	35	GB/T5789-1986	M6x30 bolt	3	68	KG240-11004	Slide bush	1	101	KG690-01004	Cylinder head shim	2	134	KG670-09002	Fuel intake pipe setting bush	1	167	KG160-02008	Rocker shaft	4
3	KG670-15200	Stator winding assembly of flywheel generator	3	36	KG670-13420	Engine cooler protector meshwork weldment	1	69	KG160-11008	Slide bush shim	1	102	KG670-01200	Left-below air guide weldment	1	135	KG160-09003	Band (I)	2	168	KG240-02009	Air valve rocker arm	4
4	GB/T5789-1986	M6x35 bolt	13	37	GB/T5789-1986	M6x16 bolt	6	70	KG160-11009	Retainer ring	3	103	KG670-14220	Alarm system	1	136	KG670-09200	Filter element	1	169	KG160-02016	Rocker shaft regulation nut	4
5	KG670-14100	Left ignition coil assembly	1	38	KG670-13401	O-ring	2	71	KG670-13112	Rotator pump shaft	1	104	KG670-01013	Lead protector sheath	1	137	KG670-09009	Filter element mounting band	1	170	KG240-02011	Pushing rod pilot plate	2
6	KG670-05100	Flywheel part	1	39	KG670-13003	Damping washer bush	2	72	KG670-01005	Crankcase cover shim	1	105	KG670-14300	Shut down switch	1	138	GB/T5789-1986	M8x45 bolt	4	171	KG160-02007	Rocker shaft bolt	4
7	KG670-12003	Air guide cover stud	4	40	KG670-13002	Engine cooler dumping gasket	2	73	KG160-01011	Crankcase cover seat pin	2	106	KG670-01300	Side plate weldment of left-below air guide plate	1	139	KG670-02018	Air intake pipe	1	172	KG670-02024	Wind-proof plate	2
8	KG670-05006	Impeller	1	41	KG670-13410	Engine cooler weldment	1	74	KG670-05003	Crankshaft regulating shim	1	107	KG670-15100	Starter motor assembly	1	140	KG670-02019	Carburetor insulator	1	173	KG240-03001	Cylinder head cover seal ring	2
9	KG670-12100	Air guide cover assembly	1	42	KG670-02300	Connecting board weldment	1	75	KG690-04001	1st compression ring	2	108	KG670-01025	Nylon pipe clamp I	1	141	KG670-02022	Carburetor shim	3	174	KG670-03002	Cylinder head cover (I)	1
10	GB/T6177.1-2000	M6 nut	4	43	KG670-14002	Bushing pipe	2	76	KG690-04002	2nd compression ring	2	109	KG670-01700	Switch mounting bracket weldment	1	142	KG670-02021	Air inlet connecting pipe	1	175	KG670-03005	Refueling port	1
11	GB/T5789-1986	M6 x 25 bolt	2	44	KG240-14210	Oil alarm	1	77	KG690-04100	Oil ring part	2	110	KG670-01600	Voltage regulator frame weldment	1	143	GB/T5789-1986	M6x30 bolt	2	176	KG670-03004	Refueling port cap	1
12	GB/T845-1985	Self-tapping screw ST55	2	45	KG670D-05001	Crankshaft	1	78	KG690-04003	Piston	2	111	KG670-15300	Charging voltage regulator assembly	1	144	GB/T5789-1986	M6x65 bolt	1	177	GB/T5789-1986	M6x25 bolt	8
13	KG670-12001	Decorative plate of air guide cover	1	46	KG670-05002	Crankshaft timing gear	1	79	KG670-04004	Piston pin	2	112	GB/T5789-1986	M6 x 16 bolt	2	145	KG670-10000	Carburetor assembly	1	178	KG670-02025	Flying rings	2
14	KG670-05005	Flywheel nut gasket	1	47	KG670-13117	Engine oil pump drive gear	1	80	KG670-04201	Connecting rod body	2	113	KG670-15600	Starter switch assembly	1	146	KG670-07301	Choke shell	1	179	GB/T5789-1986	M8x20 bolt	2
15	KG670-05004	Flywheel nut gasket	1	48	KG670-13116	Rotator pump shaft bushing	1	81	KG240-04005	Retainer ring	4	114	KG670-14001	Wire sheath	1	147	GB/T5789-1986	M6 x 90 bolt	4	180	KG670-08200	Bracket weldment	1
16	GB/T5789-1986	M8x16 bolt	3	49	KG670-13114	Engine oil pump cover	1	82	KG670-04202	Connecting rod cover	2	115	KG670-15400	Harness assembly of voltage regulator	1	148	KG670-07210	Air cleaner lower cover joint part	1	181	GB/T5789-1986	M8x16 bolt	8
17	KG670-05007	Impeller pressure plate	1	50	KG670-13111	Engine oil pump inner rotator	1	83	KG670-04203	Connecting rod bolt	4	116	GB/T5789-1986	M8x110 bolt	2	149	KG670-07214	Bush I	2	182	KG670-08100	Muffler weldment	1
18	KG670-14400	Right ignition coil assembly	1	51	KG670-13101	Engine oil pump exterior rotator	1	84	GB/T5789-1986	M6x25 bolt	1	117	KG670-11402	Throttle operation grip	1	150	KG670-07004	Filter element supporting plate	1	183	KG670-08001	Muffler guard cover	1
19	KG670-07002	Air exhaust pipe band	1	52	GB/T308-1989	Steel ball	1	85	KG160-01011	Locating pin	1	118	KG670-11401	Throttle operation lever	1	151	GB/T5789-1986	M6x28 bolt	2	184	GB/T5789-1986	M6x12 bolt	6
20	KG670-07001	Air exhaust pipe of breather	1	53	KG670-13102	Pressure-limiting valve spring	1	86	KG670-06212	Tappet connecting plate	1	119	KG670-11201	Choke pulling lever grip	1	152	KG670-07102	Air cleaner element seal gasket	1	185	GB/T6177.1-2000	M8 nut	4
21	KG670-01014	Retainer plate	1	54	KG670-13113	Inner rotator drive pin	1	87	KG670-06211	Tappet pin shaft	2	120	KG670-11202	Choke pulling lever	1	153	KG670-07110	Air cleaner element joint	1	186	KG240-02015	Exhaust pipe shim	2
22	KG670-01015	Breather cover	1	55	GB/T5789-1986	M6x20 bolt	5	88	KG160-11006	Flat gasket	5	121	KG670-11005	Speed control pushing rod	1	154	KG670-07201	Air cleaner upper cover	1	187	KG670-02017	Exhaust pipe stud	4
23	KG670-01016	Breather cover shim	1	56	KG670-13301	Engine oil rough filter shell	1	89	KG670-06203	Regulating spring	2	122	KG670-11014	Pushing rod shim	3	155	KG670-02014	Intake pipe shim	2	188	KG670-02100	Cylinder head machining part I	1
24	KG670-01017	Breather piece	1	57	KG670-13310	Rough strainer assembly	1	90	KG670-06001	Valve pushing rod	4	123	KG240-11012	Band reed	3	156	KG670-02200	Cylinder head machining part(II)	1	189	KG670-03003	Cylinder head cover (II)	1
25	KG670-01008	Oil drain plug shim	2	58	KG670-01006	Crankcase cover	1	91	KG160-11019	Retainer ring	2	124	GB/T5789-1986	M6x16 bolt	2	157	KG240-01003	Cylinder head M10x80 bolt	8	190	KG670-09007	Band (III)	2
26	KG670-01007	Oil drain plug	2	59	GB/T5789-1986	M8x50 bolt	9	92	KG670-06201	Valve tappet I	2	125	KG670-11011	Governor arm	1	158	TDRCH F6RTC	Spark plug	2	191	KG670-09006	Fuel supply pipe	1
27	GB/T5789-1986	M6 x10 blot	13	60	KG670-01018	Front oil seal	1	93	KG670-06202	Valve tappet II	2	126	KG670-11300	Speed-regulation supporting plate assembly	1	159	KG340-02004	Air intake valve	2	192	KG670-09005	Breather pipe	1
28	KG670-01500	Side plate weldment of right-below air plate	1	61	KG670-01019	Oil filler plug of the crankcase cover	1	94	GB/T276-1994	Bearing 17 x35 x10	1	127	KG670-01032	Starting motor seat pin	2	160	KG240-02012	Air intake valve conduit oil seal	2	193	KG1000Ti-07100	Fuel vacuum pump part	1
29	KG670-01028	Ventilating pipe	1	62	KG670-01100	Oil dipstick	1	95	KG670-06002	Camschaft regulation gasket	1	128	GB/T818-2000	M6x16 screw	2	161	KG240-02006	Air valve spring	4	194	GB/T5789-1986	M5x16 bolt	1
30	KG670-01400	Right-below air plate weldment	1	63	KG160-11006	Flat gasket	5	96	KG670-06100	Camschaft part	1	129	GB/T96-1985	Big gasket	2	162	KG240-02001	Intake valve spring seat	2	195	KG670G-05001	Crankshaft	1
31	KG670-13001	Engine oil pipe band	1	64	KG670-11101	Governor gear	1	97	KG670-05008	Woodruff key	1	130	KG670-11500	Throttle operation grip assembly	1	163	KG340-02005	Air exhaust valve	2	196	KG670G-11300	Governor supporting plate	1
32	KG670-13430	Engine oil pipe assembly of engine cooler	2	65	KG670-11103	The weight pin	3	98	GB290-1982	Needle bearing 7941/8	2	131	KG670-09003	Setting bush	1	164	KG240-02013	Air exhaust spring lower seat	2	197	KG670-14003	Alarm mounting bolt	2
33	KG670-13201	O-ring	2	66	KG670-11102	The weight	3	99	KG670-01022	Oil seal of speed-limiting pushing rod	1	132	KG670-09001	Vacuum pump mounting bracket	1	165	KG240-02002	Exhaust valve spring seat	2	198	KG670-01026	Nylon pipe clamp (II)	1